

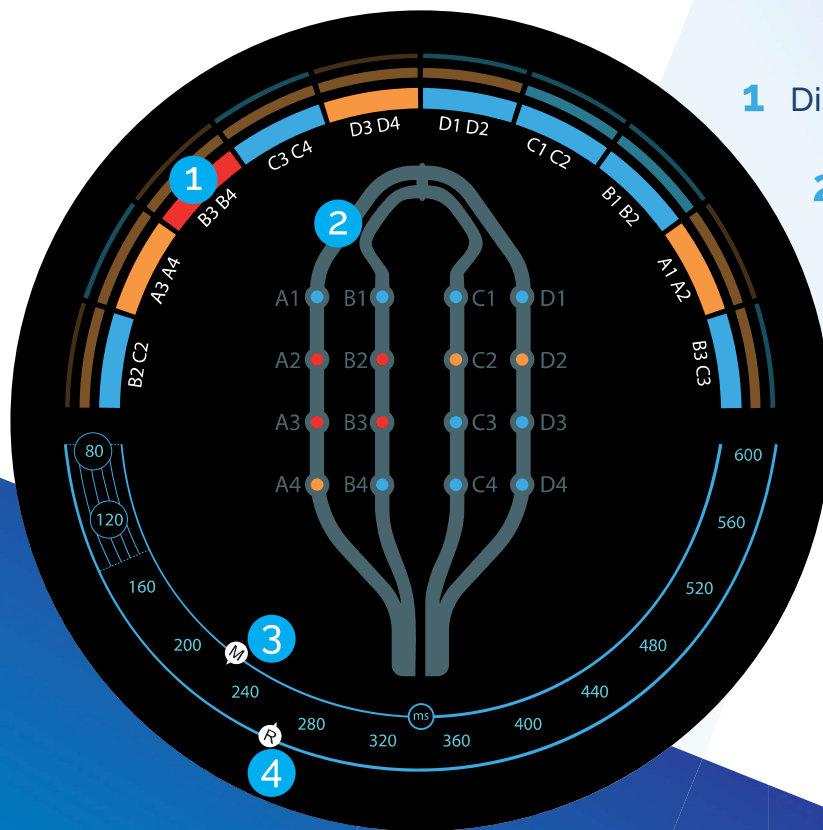
VX1

VOLTA
MEDICAL

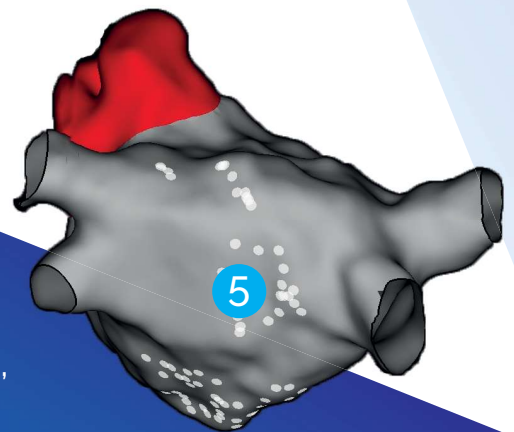
ARTIFICIAL INTELLIGENCE SOFTWARE FOR CARDIAC ELECTROPHYSIOLOGY

Designed to facilitate AF & AT mapping during ablation procedures¹.

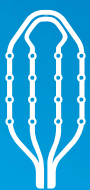
VX1 provides an AI enhanced detection of spatio-temporal dispersion areas, indicative of drivers of the arrhythmia^{1,2,3}.



- 1 Dispersion Indicator
- 2 Mapping Catheter Schematic
- 3 Mapping Cycle Length
- 4 Reference Cycle Length
- 5 Volta Dispersion Tags



Compatibility with most mapping catheters,
EP recording and 3D navigation systems¹.



TRANSFORMING EP DATA INTO AI SOLUTIONS



RAPID ANALYSIS

Real time analysis algorithm¹.



DATA DRIVEN

Implements machine learning algorithms including deep learning¹.



EXPERT PHYSICIAN DATABASE

Algorithms trained on a very large database of EGMs, annotated by expert electrophysiologists¹.



TAILORED AND INTUITIVE WORKFLOW¹

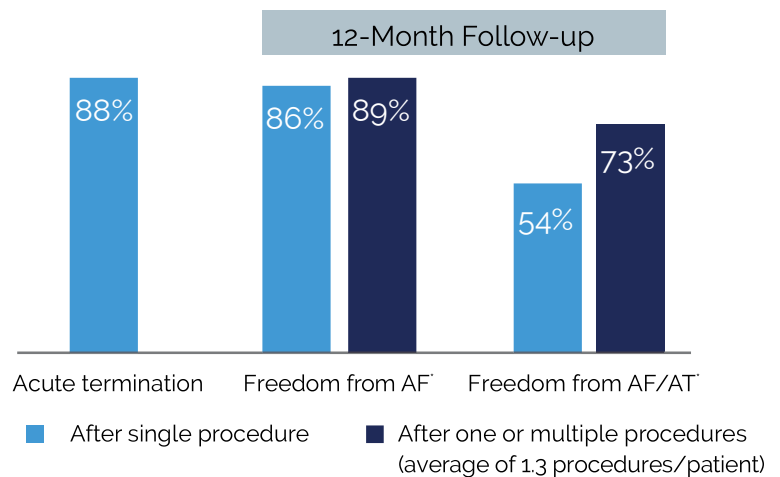
Allows for a fast learning curve^{2,4} and standardized outcomes across operators².

VX1 CLINICAL EVIDENCE

Ev-AIFib²

Ev-AIFib² is a prospective, multicentric, non-randomized study conducted to determine the feasibility and relevance of constructing VX1 dispersion maps for the ablation of persistent AF and that the use of VX1 allows for a robust center-to-center standardization of ablation outcomes.

- 85** persistent & long-standing persistent AF patients
- 8** sites (1 primary center and 7 satellite centers)
- 17** operators using the 3 major mapping systems.



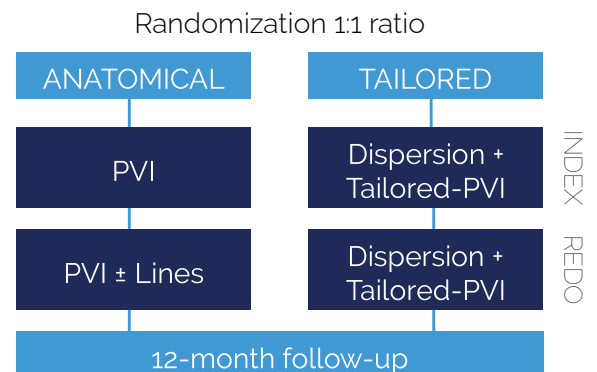
Tailored-AF⁵

Tailored-AF⁵ is an international, multicenter trial designed to determine if a tailored VX1 AI software-guided ablation strategy is superior to a conventional anatomical ablation strategy targeting PVI alone for the treatment of persistent AF.

- 374** patients
- 26** sites (France, the USA, Germany, Belgium, the Netherlands)

Primary Endpoint

Freedom from documented AF episodes lasting longer than 30 seconds, with or without anti-arrhythmic drugs (AADs), 12 months after a single index ablation procedure.



*With or without antiarrhythmic drugs. There were nine patients for whom AAFs were not discontinued.



Volta Medical is a data inspired, AI solutions EP company whose mission is to aid in the diagnosis of complex heart rhythm disease

¹VX1™ SYSTEM USER MANUAL, I001-1.4-EU, February 2023.

²SEITZ, Julien, MOHR DURDEZ, Théophile, ALBENQUE, Jean-Paul, et al. Artificial Intelligence Software Standardizes Electrogram-based Ablation Outcome for Persistent Atrial Fibrillation. Journal of Cardiovascular Electrophysiology, 2022. <https://doi.org/10.1111/jce.15657>

³SEITZ, Julien, BARS, Clément, THÉODORE, Guillaume, et al. AF ablation guided by spatiotemporal electrogram dispersion without pulmonary vein isolation: a wholly patient-tailored approach. Journal of the American College of Cardiology, 2017, vol. 69, no 3, p. 303-321. <https://doi.org/10.1016/j.jacc.2016.10.065>

⁴DEISENHOFER, Isabel. Electrogram-based AF ablation—finally, reproducibility!. Journal of Cardiovascular Electrophysiology, 2022. <https://doi.org/10.1111/jce.15660>

⁵Tailored-AF, NCT04702451

The VX1 system is a Class IIa Medical Device manufactured by Volta Medical. This product is CE marked by TÜV Rheinland LGA Products GmbH (0197) and FDA cleared.

CAUTION: See User Manual/Instructions for Use for full prescribing information, including indications, contraindications, warnings, precautions and adverse events.

Volta Medical® a brand of SUBSTRATE HD SAS - Share capital: 19 925,40 Euros - RCS Marseille 820 967 875 - Headquarters at Tour Méditerranée, 65, avenue Jules Cantini, 13006 Marseille (France)

©2023 Volta Medical. All rights reserved.

All pictures shown are for illustration purpose only.



volta-medical.com



volta-medical



sales@volta-medical.com

